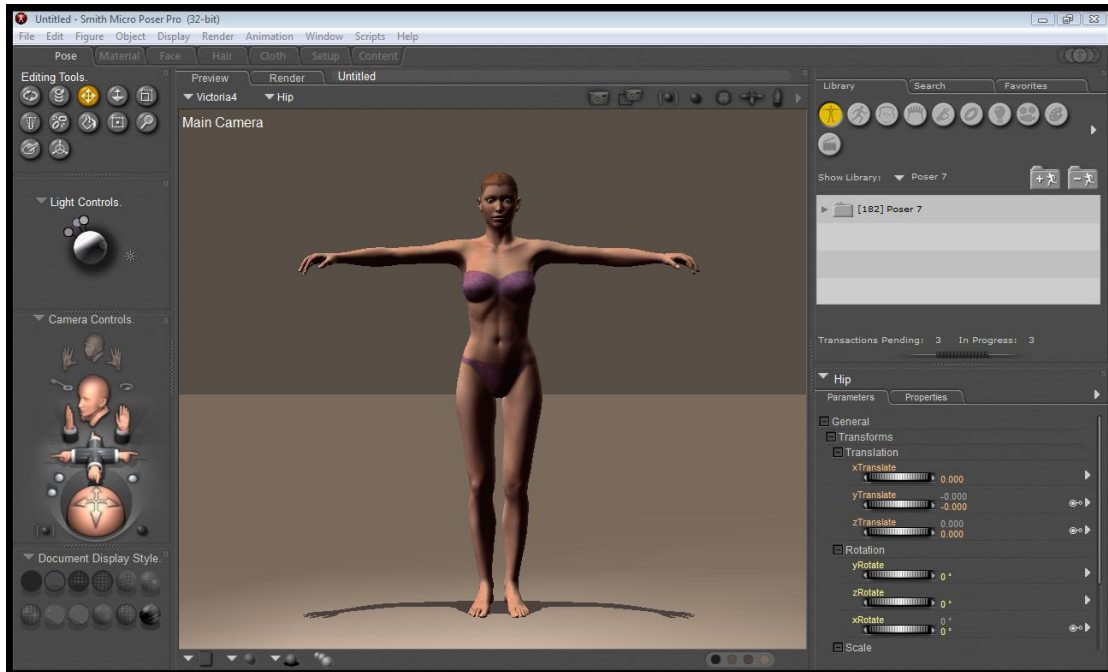

Simple Steps With Poser

**02 Goodbye - Hello
to the Ground
Plane and Ground
Shadows**

**Copyright
Richard H. Eagle 2012**

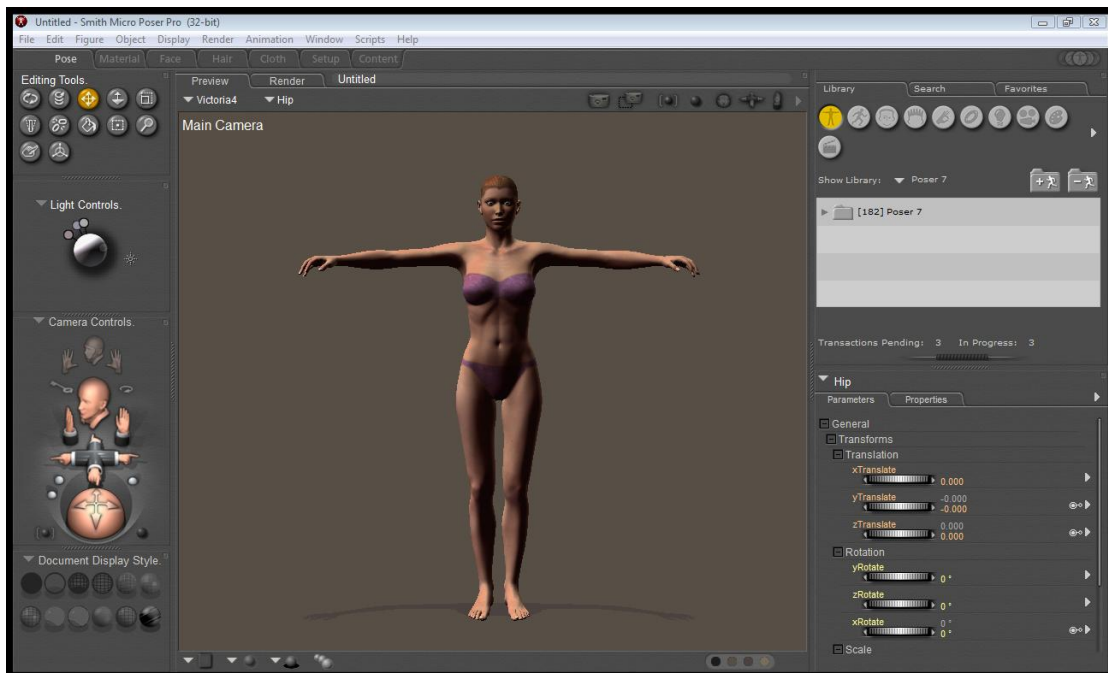
Goodbye and Hello to the Ground Plane

Sometimes you may want to remove the **Ground Plane** that your figure is standing on.



This is very easy.

Hold down your Ctrl key and then press your G key.



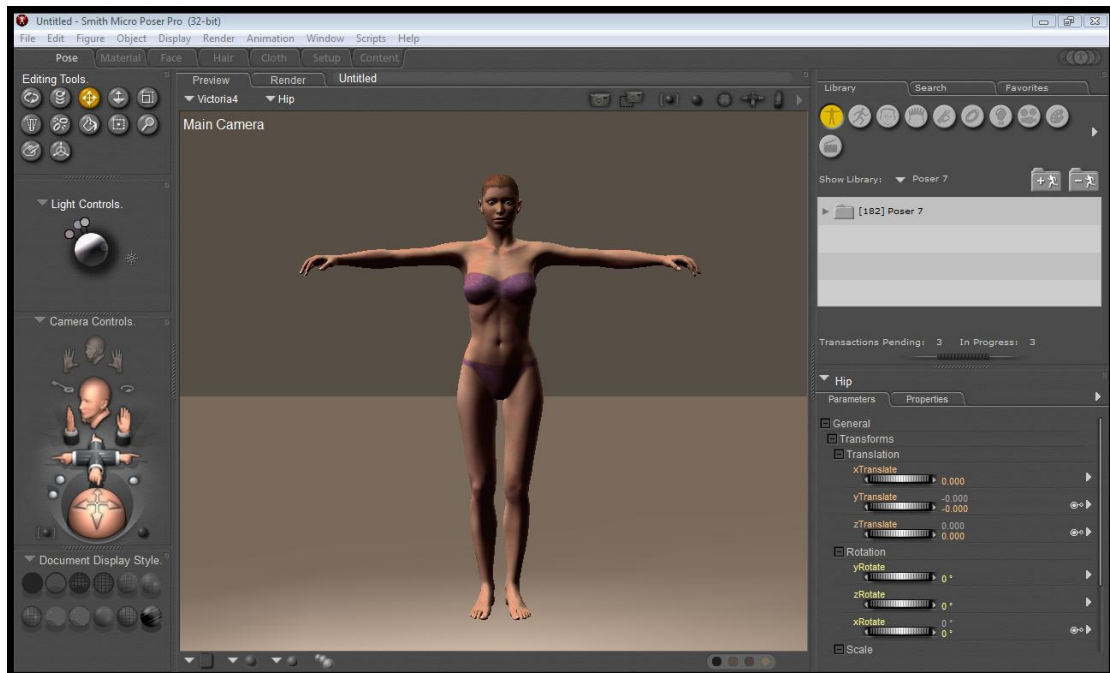
So, you want it back? Just **hold down the Ctrl key and press the G key** and it will come back

Goodbye and Hello to the Ground Shadows

Go to the **Display menu** at the top of the screen.

Look down the menu options and you will see a tick at the side of **Ground Shadows**.

Left click on that option and **it will take off the Ground Shadows**.



To put the **Ground Shadows on**, go back to the **Display menu** at the top of the screen.

Left click on the **Ground Shadows** option and **it will appear again**.

I hope you have enjoyed this little tutorial.

Richard H. Eagle