



*Using the  
SeaFolk Kelp Hair  
with Genesis 2 Female  
and Genesis 3 Female*

# End User License Agreement

## EULA

This tutorial, herein referred to as the “work”, is provided as-is with no warranties either expressed or implied.

You MAY copy, share or distribute unmodified copies of this “work” in its original PDF form under these conditions: 1) must give clear and proper credit to the producer "Winterbrose Arts & Graphics"; 2) must clearly and noticeably state source as "www.WINTERBROSE.com"; and 3) must be given without cost of any kind whatsoever to others.

You MAY NOT modify, change or create derivative works based upon this “work” in any form or fashion or by any method. You MAY NOT sell this “work” or include this “work” in any package or collection that is for sell. You MAY NOT claim authorship in any form for this “work”.

Winterbrose A&G retains all copyright ownership and reserves all rights to work.



Copyright (c) 2016, Winterbrose Arts & Graphics. All Rights Reserved.

[www.WINTERBROSE.com](http://www.WINTERBROSE.com)

### TABLE OF CONTENTS

Genesis 2 Female .....	3
Genesis 3 Female .....	6
Important Links.....	9

## Genesis 2 Female

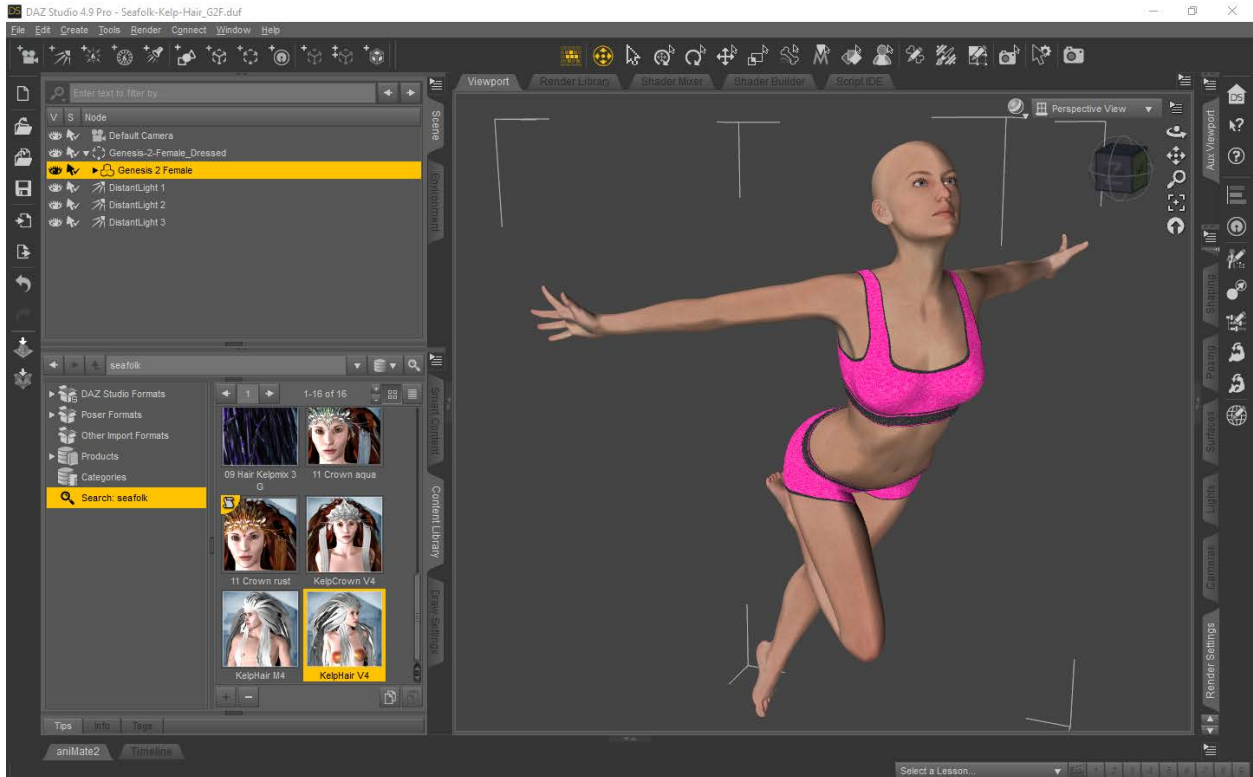


*Genesis 2 Female (G2F)*

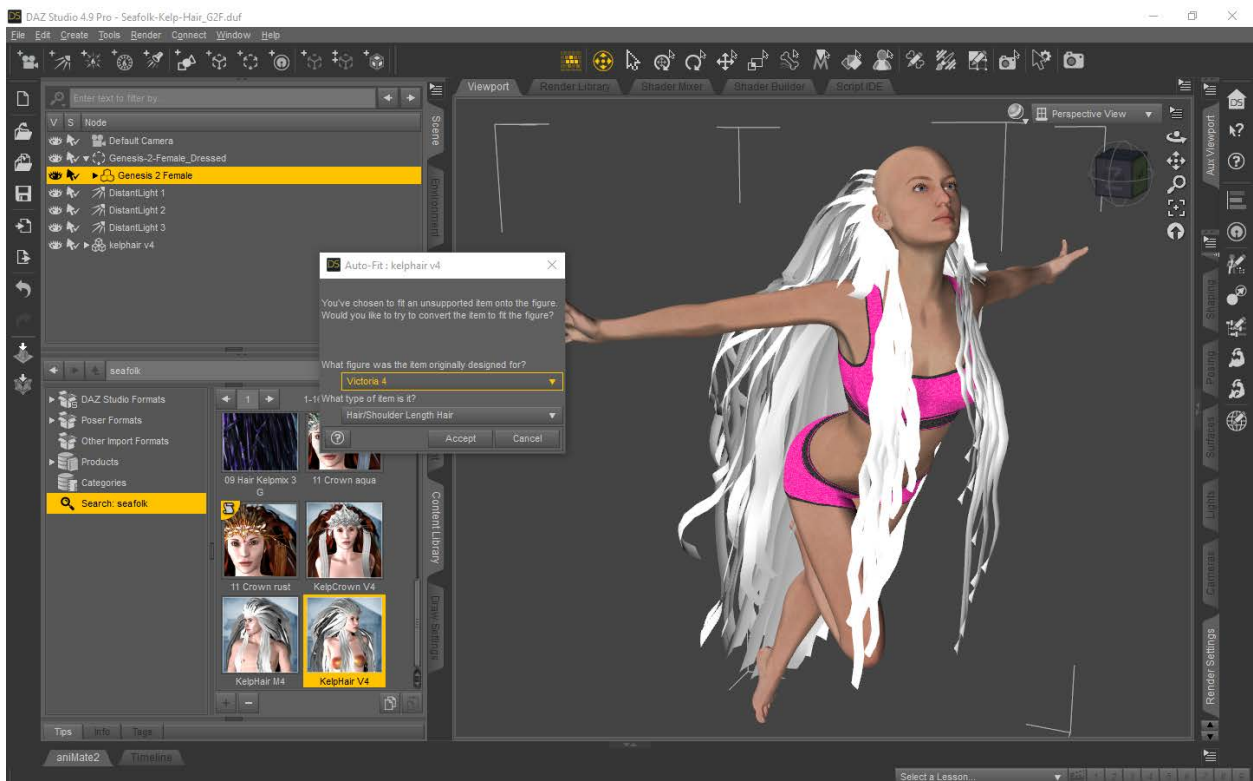
Here are the steps to use the Kelp Hair with G2F followed by screenshots:

1. Load Genesis 2 Female (G2F) character into Scene
2. Select G2F character in the Scene tab
3. Load KelpHair V4 hair prop into Scene
4. When the Auto-Fit popup appears:
  - a. Select Victoria 4 as figure designed for
  - b. Select Hair / Shoulder Length Hair as type
  - c. Click the Accept button

# WINTERBROSE ARTS AND GRAPHICS

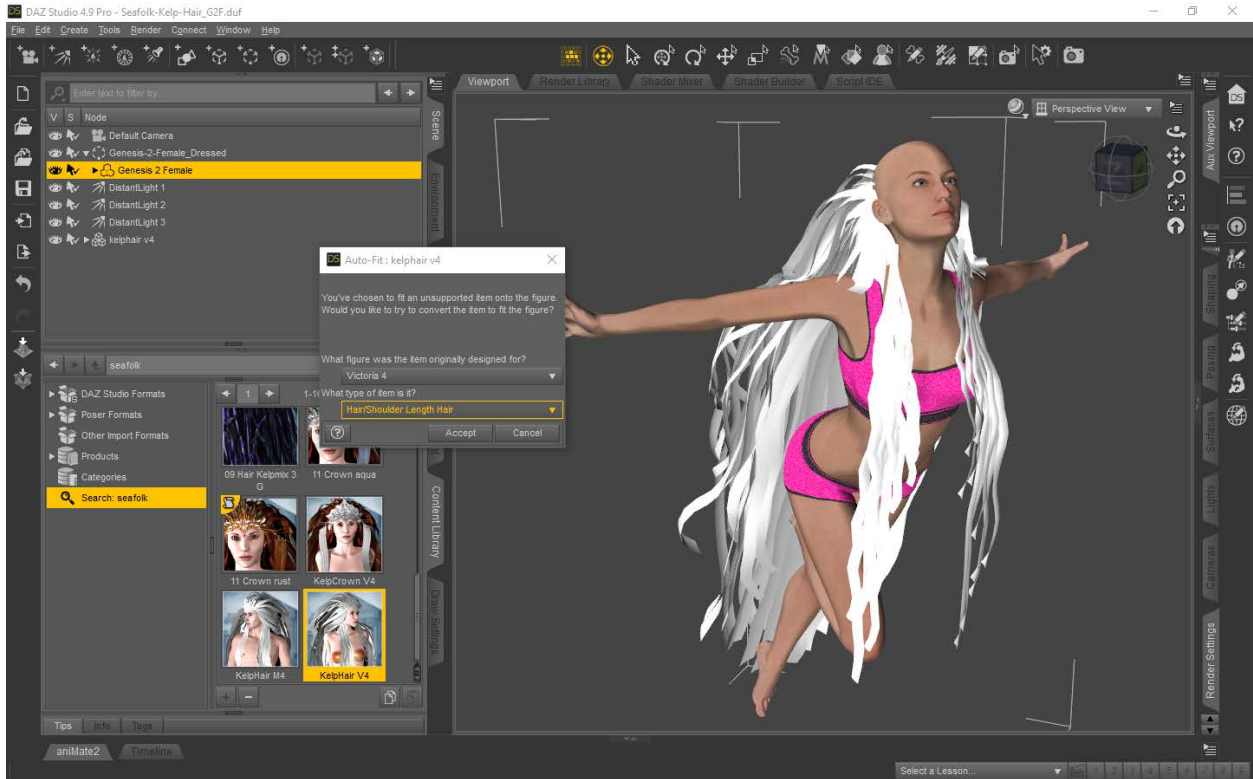


*Load Genesis 2 Female (G2F) into Scene; select G2F; then load KelpHair V4 prop into Scene.*



*When the Auto-Fit popup appears, select Victoria 4 as figure designed for.*

# WINTERBROSE ARTS AND GRAPHICS



*Select Hair / Shoulder Length Hair as type, and click the Accept button.*



*G2F with Kelp Hair*

## Genesis 3 Female



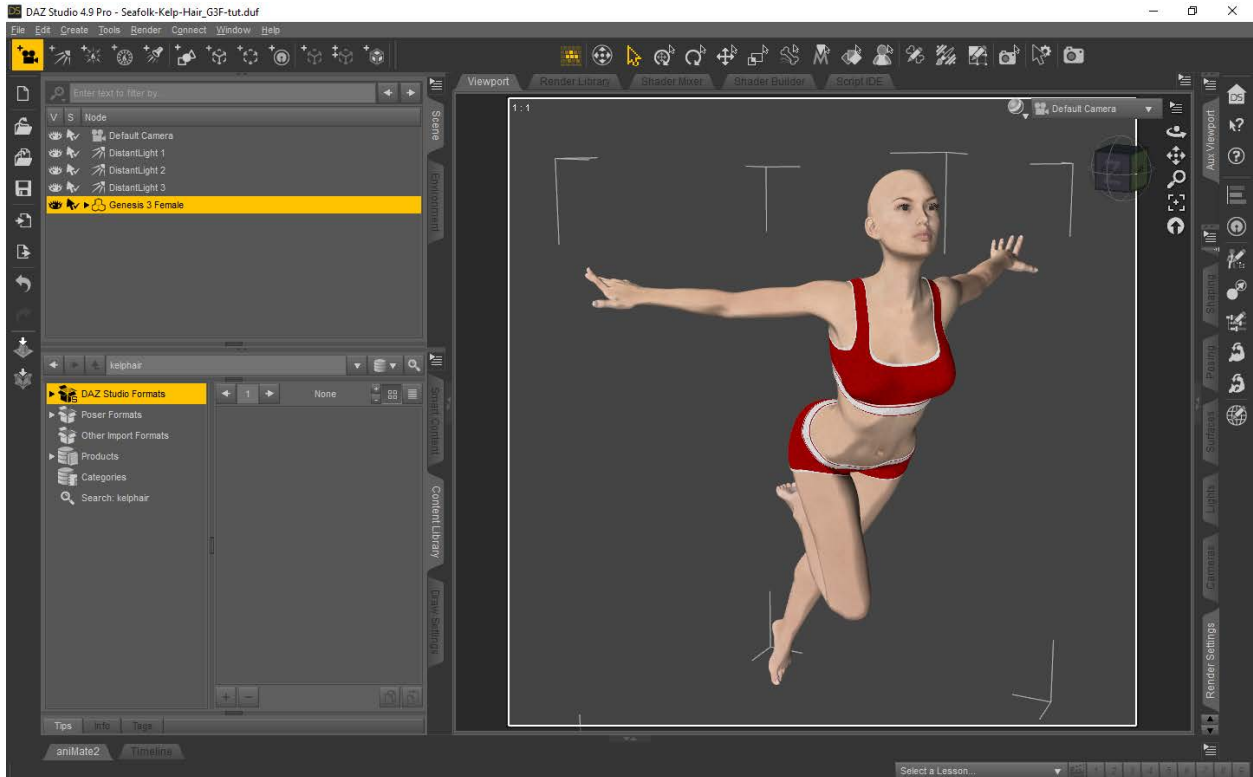
*Genesis 3 Female (G3F) Victoria7 (V7) Character*

Here are the steps to use the Kelp Hair with G3F followed by screenshots:

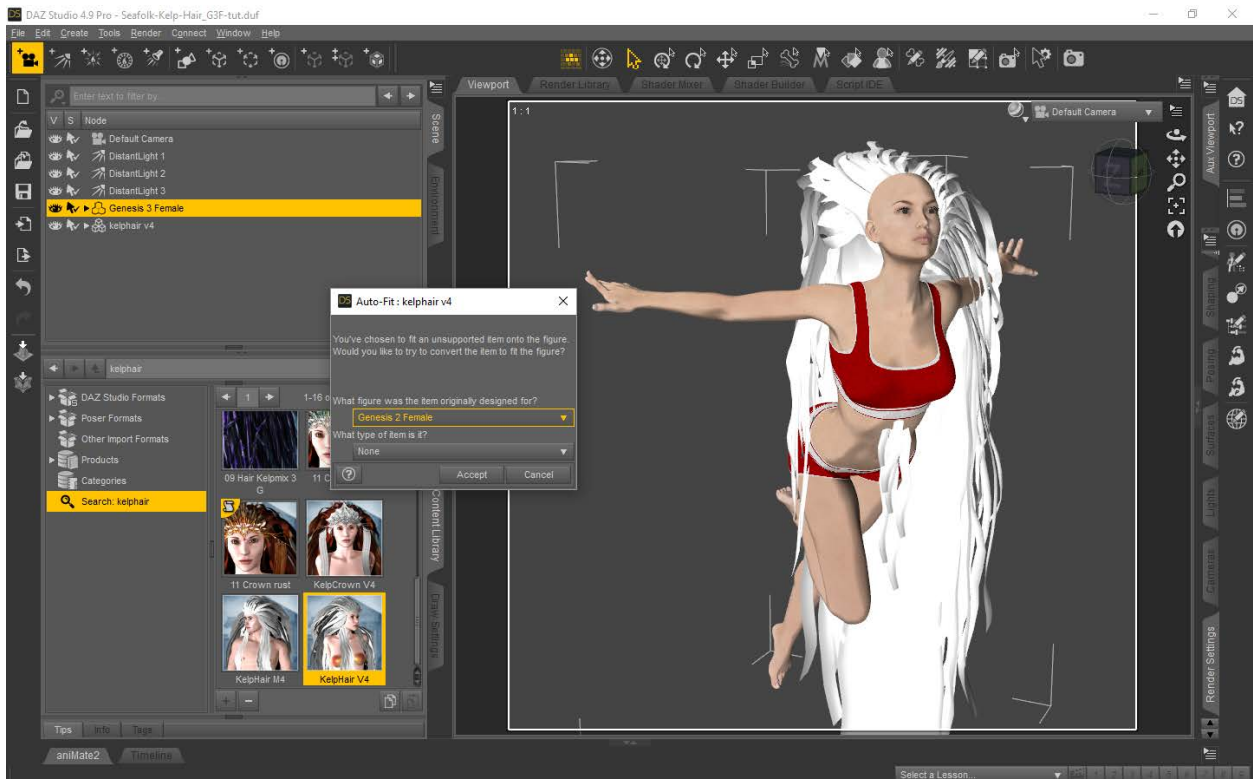
1. Load Genesis 3 Female (G3F) character into Scene
2. Select G2F character in the Scene tab
3. Load KelpHair V4 hair prop into Scene
4. When the Auto-Fit popup appears:
  - a. Select Genesis 2 Female as figure designed for
  - b. Select Hair / Shoulder Length Hair as type
  - c. Click the Accept button



# WINTERBROSE ARTS AND GRAPHICS

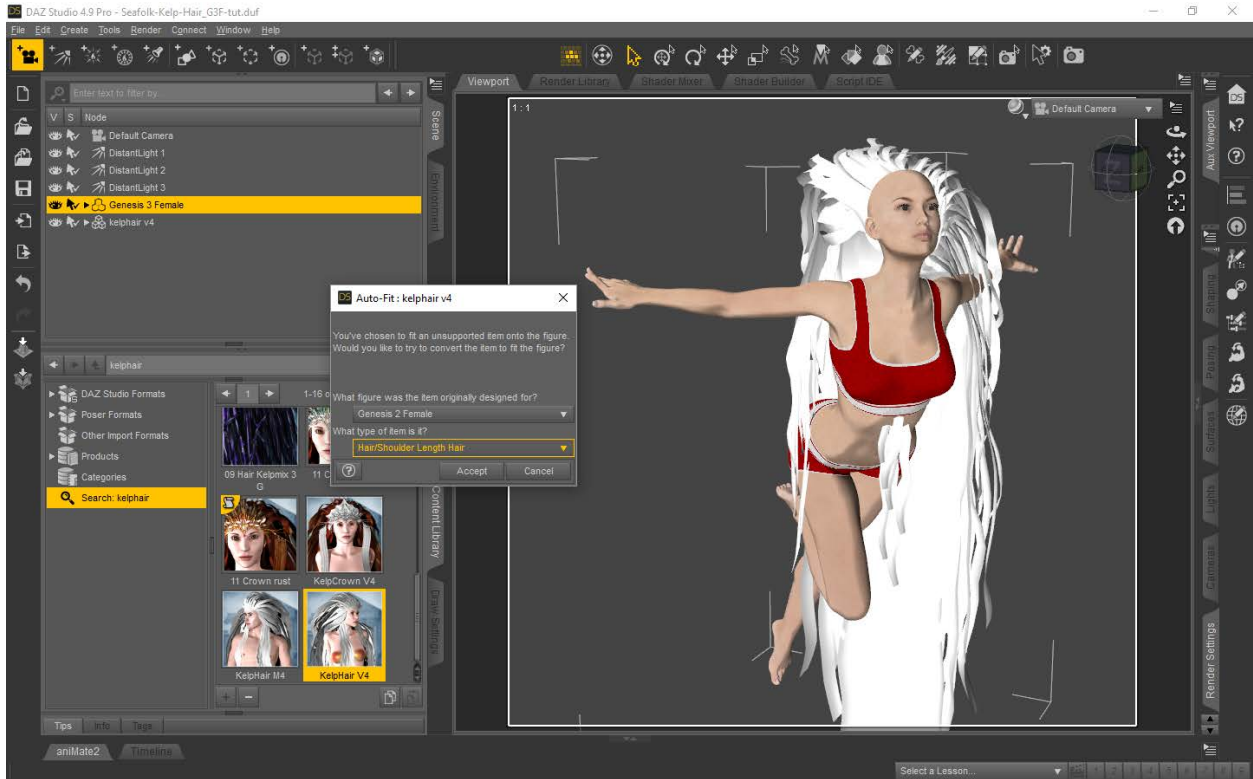


*Load Genesis 3 Female (G3F) into Scene; select G3F; then load KelpHair V4 prop into Scene.*



*When the Auto-Fit popup appears, select Genesis 2 Female as figure designed for.*

# WINTERBROSE ARTS AND GRAPHICS



*Select Hair / Shoulder Length Hair as type, and click the Accept button.*



*G3F with Kelp Hair*



## **Important Links**

### **Winterbrose Arts and Graphics**

[www.WINTERBROSE.com](http://www.WINTERBROSE.com)

### **Webpage for this Guide**

[Using SeaFolk Kelp Hair on Genesis 2/3 Females](#)

### **YouTube Video Demonstration**

[Using SeaFolk Kelp Hair on G2F/G3F Video](#)

### **Product page for SeaFolk Kelp Hair**

[SeaFolk Kelp Hair from Daz3D](#)

### **Never Miss Another Opportunity**

[Subscribe To Our Newlsetter](#)